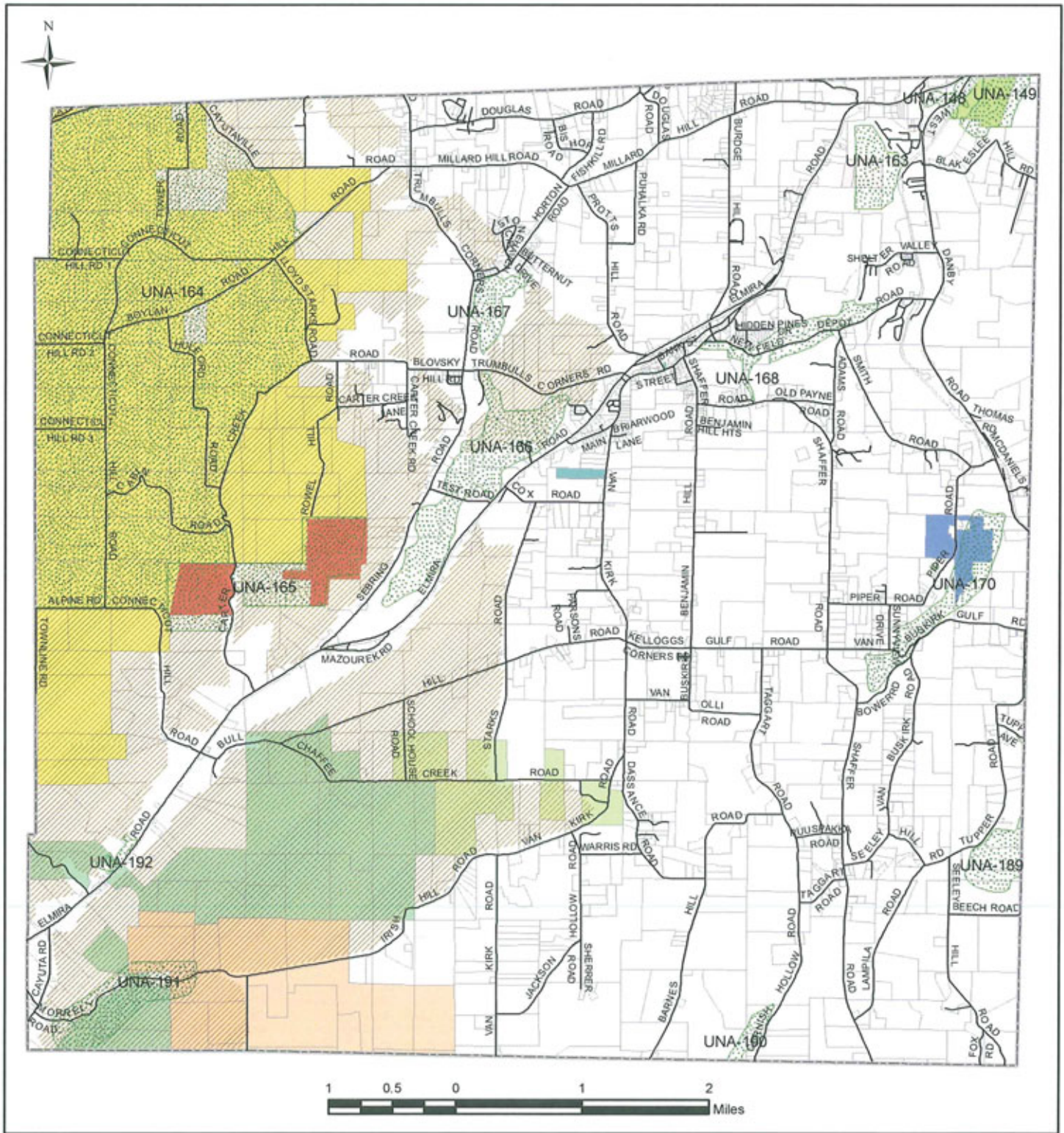


Town of Newfield

Unique Natural Areas and Important Bird Areas Protected Open Space



- Unique Natural Areas
- Important Bird Areas
- Tax Parcels 2009
- State Forest
- State Wildlife Management Area
- County Forest Lands
- Municipal Park
- Cayuga Inlet Conservation Area
- Ithaca College Natural Area
- Cornell University Natural Area
- Restricted Cornell Natural Area
- Arot Forest

The Important Bird Areas data set was developed to portray a network of areas that are significant to the conservation of birds in New York. The data should be displayed at scales appropriate for each Important Bird Area polygon. The boundaries should not be perceived as absolute, definite boundaries. Rather, the boundaries should be considered approximations of areas critical to birds. No responsibility is assumed by the National Audubon Society or Auduon New York in the use of these data.
Source: National Audubon Society

Disclaimer:
This map represents a compilation of graphical and textual information from various sources including deeds and surveys, a digital planimetric base map, and digital conversion of hand-drawn mylar maps. Errors and omissions can occur from each of these sources; each source represents a large number of records and origins of information. As a practical matter, the County does not warrant the accuracy or completeness of the information portrayed. The end user of these maps agrees to accept the data "as is" with the full knowledge that errors and omissions may exist, and to hold harmless the County for any damages that may result from an inappropriate use of these maps.



Prepared by