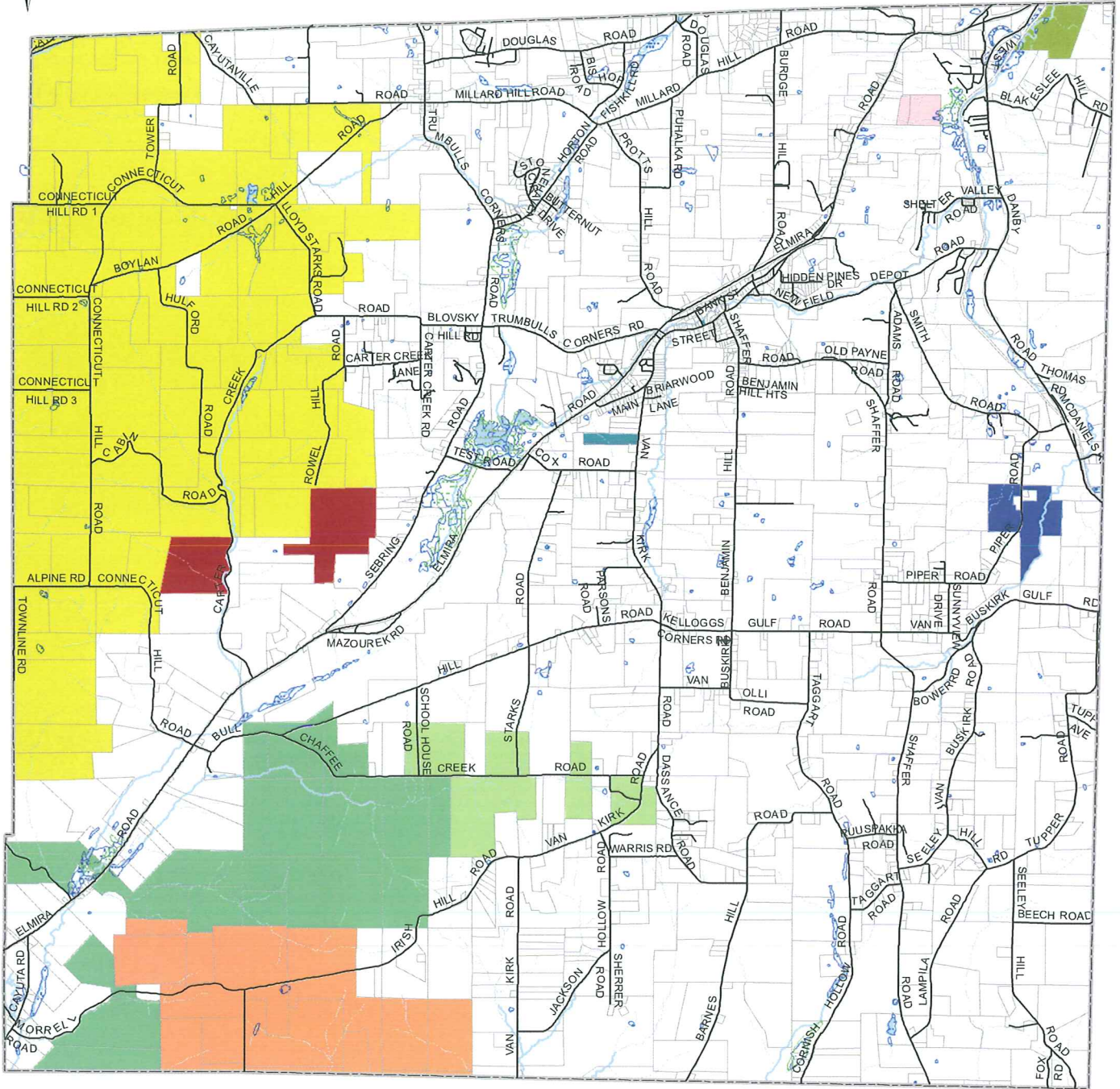


Town of Newfield Protected Open Space and Wetlands



- | | |
|---------------------------------|-----------------------------|
| Tax Parcels 2009 | Open Water |
| State Forest | Intermittent Streams |
| State Wildlife Management Area | Perennial Streams |
| County Forest Lands | National Wetlands Inventory |
| Municipal Park | NYSDEC Freshwater Wetlands |
| Cayuga Inlet Conservation Area | |
| Ithaca College Natural Area | |
| Cornell University Natural Area | |
| Restricted Cornell Natural Area | |
| Arnot Forest | |



Disclaimer:
This map represents a compilation of graphical and textual information from various sources including deeds and surveys, a digital planimetric base map, and digital conversion of hand-drawn mylar maps. Errors and omissions can occur from each of these sources; each source represents a large number of records and originators of information. As a practical matter, the County does not warrant the accuracy or completeness of the information portrayed. The end user of these maps agrees to accept the data "as is" with the full knowledge that errors and omissions may exist, and to hold harmless the County for any damages that may result from an inappropriate use of these maps.



Prepared by