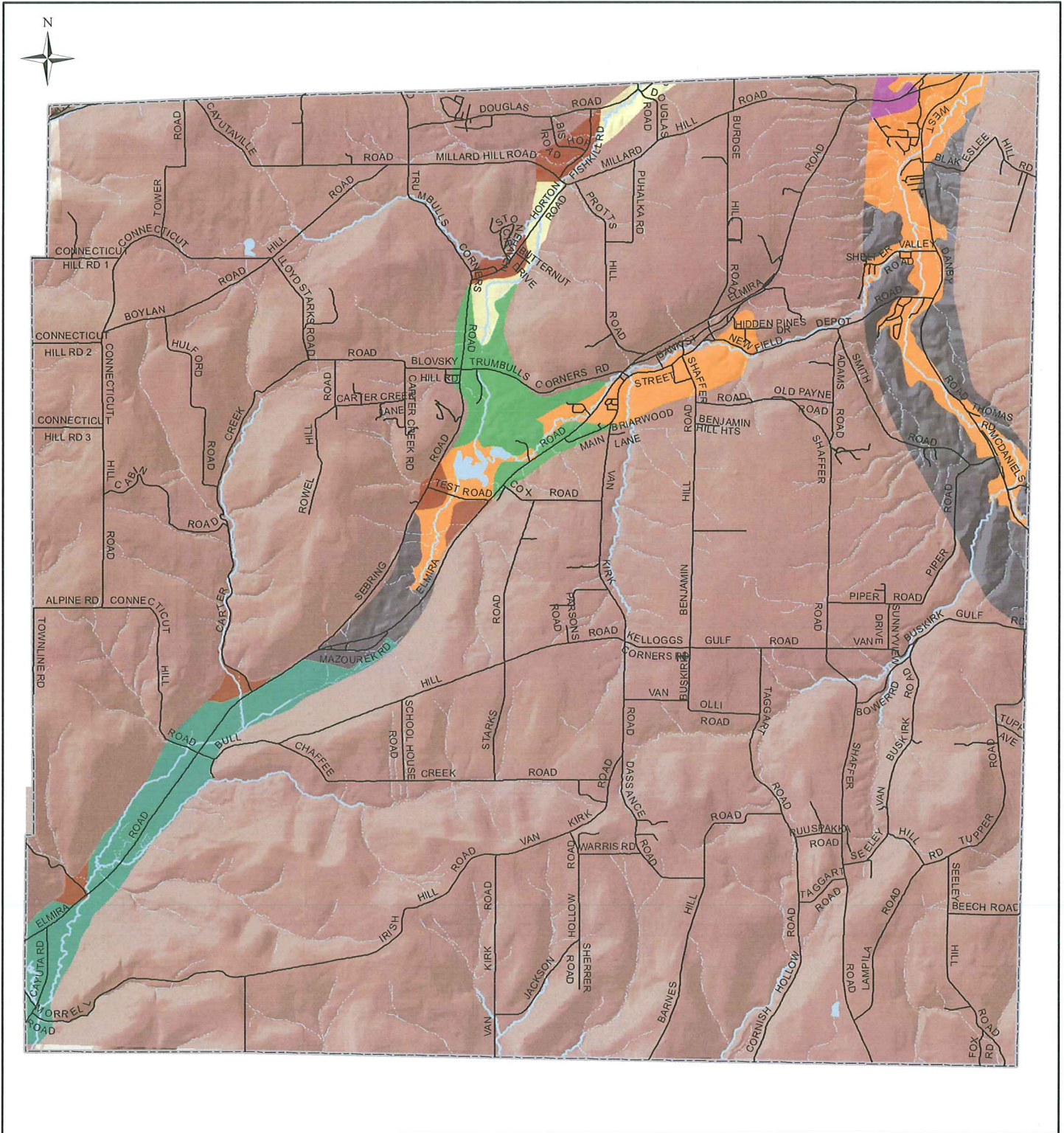


Town of Newfield Surficial Aquifers



- 1 Alluvial Sand & Gravel- unconfined
- 2 Deltaic Sand & Gravel- unconfined
- 3 Outwash Sand & Gravel- unconfined
- 4 Kame Sand & Gravel- unconfined
- 5 Sand and gravel- confined
- 6 S&G- unconfined/confined
- 7 Moraine
- 8 Unknown
- 9 Till and/or bedrock
- Open Water
- Intermittent Streams
- Perennial Streams

Unconfined aquifers are those in which the water table is exposed to the atmosphere through openings (pore spaces) in the overlying material. Unconfined aquifers are recharged by precipitation that percolates directly to the water table and by water from upland sources such as (1) runoff that seeps from adjacent unchanneled hillsides into the aquifer along its edges, and (2) seepage from tributary streams that flow from till-and-bedrock upland basins and onto the aquifer surface in the valley. Unconfined aquifers are highly susceptible to contamination from human activities because chemicals applied to, or leaked onto, land can readily migrate downward to the water table.

Source: USGS, Miller, T.S., 2000,
Unconsolidated Aquifers in Tompkins County



Disclaimer:
This map represents a compilation of graphical and textual information from various sources including deeds and surveys, a digital planimetric base map, and digital conversion of hand-drawn mylar maps. Errors and omissions can occur from each of these sources; each source represents a large number of records and originators of information. As a practical matter, the County does not warrant the accuracy or completeness of the information portrayed. The end user of these maps agrees to accept the data "as is" with the full knowledge that errors and omissions may exist, and to hold harmless the County for any damages that may result from an inappropriate use of these maps.



Prepared by